



Pumps that love grapes!



Portable, Powerful, Perfect!



Gentle with Grapes Minimal Shear Whole Cluster Friendly

## Get to know Vogelsang

Vogelsang has been a leader in the pumping industry for over 75 years. During this time, we've been responsible for most of the major innovations in positive displacement rotary lobe pump design. Recently, our rotary lobe pumps have quickly become more popular in the wine industry. Due to the nature of our pump and lobe design as well as the materials we choose, your grapes & juice can be pumped throughout your system with very little damage as compared to progressing cavity, centrifugal and metal lobe pumps. Our products aren't affected by foreign debris such as staples that typically cause damage to other types of pumps currently used.

### Cutting Edge Materials

Every application of our products has the ideal materials to optimize capacity and minimize wear. Wherever there is contact or friction between moving parts, we have developed combinations of materials that will optimize the equipment for your specific needs. This benefits you both in equipment life and in product quality. Our softer elastomeric lobes won't crush the grapes or seeds the way other pumps often do, which ultimately influences the taste of your wine.

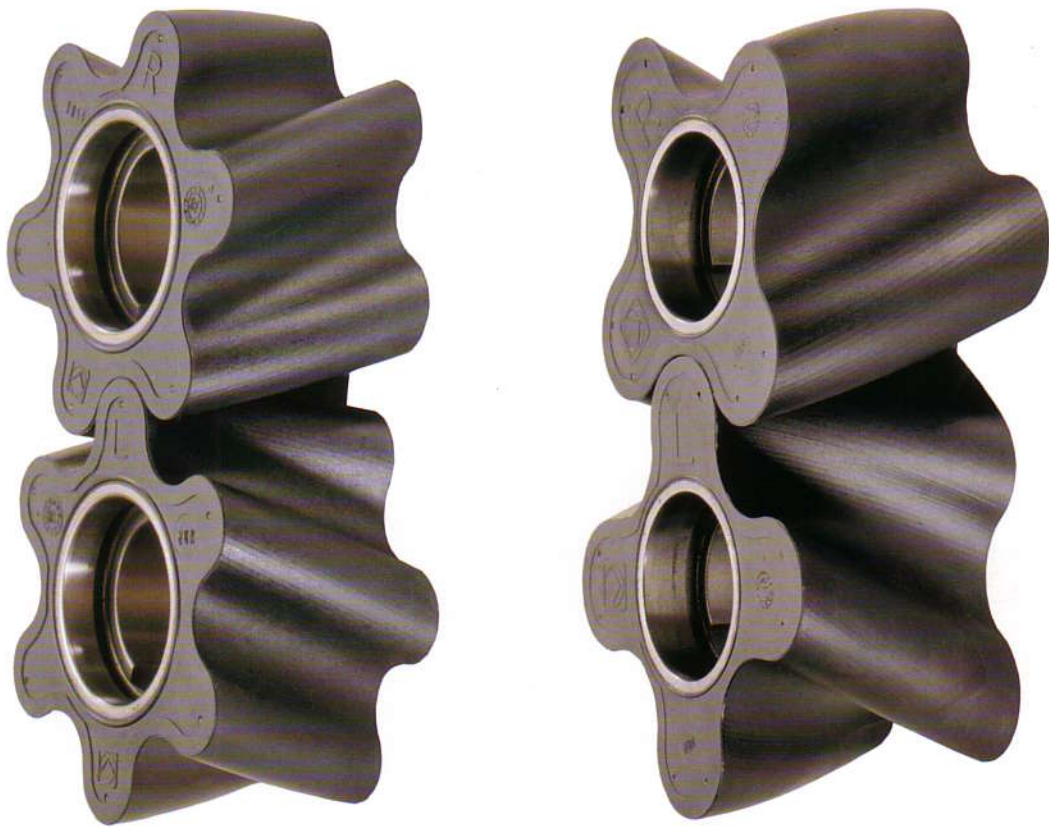
### Quality Custom Construction

Our production team will configure your equipment to the appropriate size and application for your winery, whether it be a portable pump to handle multiple tasks or a fixed pump for specific applications. Our pumps are available in many sizes and capacities that will suit any size winery's requirements. We offer the highest standard of construction and materials to ensure you get the most equipment life possible. The versatility of our products make it possible to configure them for tight areas with limited accessibility. Our pumps are smaller and lighter than traditional pumps of the same capacity. This makes it possible to get them into areas where other simply won't fit.

### Customer Service

Our relationship doesn't end with the sale. Expect quick and expert advice about our products once they're in place. When you need service or maintenance, we'll be there on time to get the job done right.



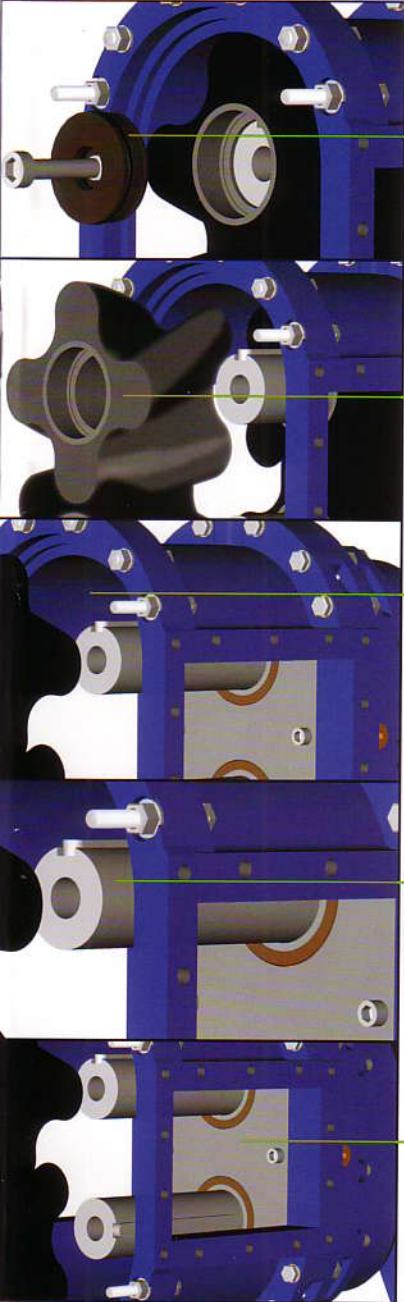


It's all about the lobes.



**Pulsation Free Wet-End Rebuilds In-line Variable Pressure**

92-1818



Quick and easy access to internal parts with in-line wetend rebuilds means minimal downtime without disturbing the piping.

HiFlo rotary lobes provide pulsation-free pumping and adjustable housing segments allow for low cost wetend repairs.

Adjustable housing segments provide proper pressure on lobes to minimize wear and maximize pressure.

No step down shafts. We have maximized the diameter of our shafts to prevent wear caused by deflection.

Wear resistant internal plates maximize pump life and reduce service downtime.

## Get to know HiFlo

The state of the art in positive displacement pumps. The HiFlo Lobe has increased capacity compared with former lobe designs while eliminating pulsation. When you choose a Vogelsang Rotary Lobe Pump, you get a product that is quieter, higher capacity, significantly smaller and longer lasting than any traditional pump in the wine industry. The convoluted design of the HiFlo Lobe provides a large cavity that's perfect for pumping grapes in clusters, must, lees and pumace. This design also makes it possible to achieve your desired pressure at a slower rpm which results in less damage to your grapes and minimal shear to your juice

Proven by years of success in the waste water industry, Vogelsang products are built to take on tough applications with ease. HiFlo pumps can self prime to 25' (8m), run dry, discharge to over 200psi (15 bar), pump forward or reverse and pass solids up to 2½" (61mm).

Our pumps are also very small compared to traditional pumps of the same capacity. This allows them to be placed into small areas with limited accessibility. They can be doubled and combined into powerful multi-stage systems that can easily move massive amounts of grapes. We offer pumps in many sizes and configurations to fit most any situation. There are also many options for internal parts. Softer, less expensive elastomers are well suited for pumping grapes and juice, allowing longer equipment life.

When maintenance is necessary, our pumps offer wet end rebuilds in-line without disturbing surrounding piping. Quick release panels give ready access to internal parts making service easier and faster.



## Get to know the Facts

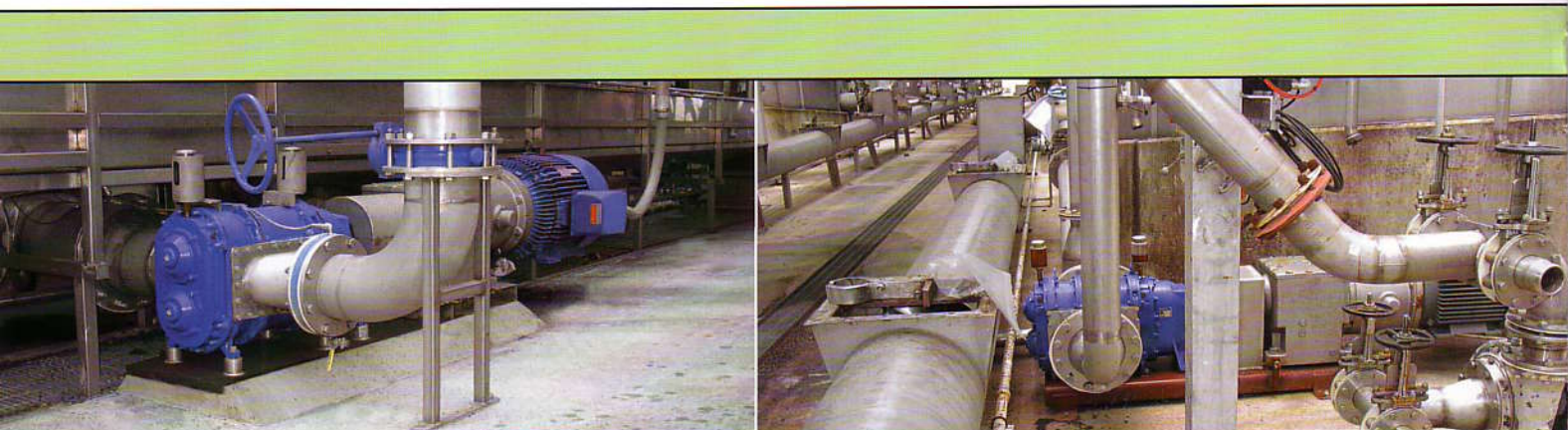
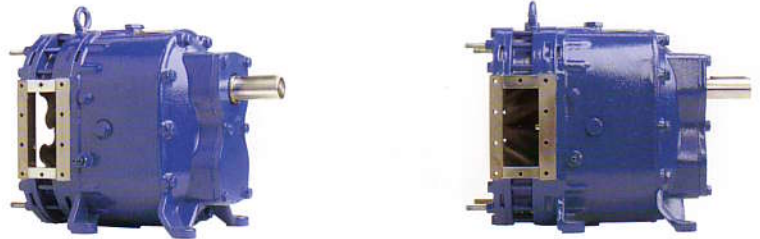
Our pumps can be configured in a multi-purpose portable cart configuration as shown on page two of this booklet for smaller volume applications or as a stationary unit. A cart-mounted pump can easily be moved around to various stations throughout your winery for pumping grapes and juice. For larger volume wineries, we offer several larger stationary or cart-mounted single application pumps that may be customized in configuration to suit many of the applications in the wine industry. The following is a list of applications best suited for our rotary lobe pumps in either portable or stationary versions depending on your required volume.

### Must

The best pump to move your grapes from a hopper or crusher into a holding tank is the one that delivers them most intact. *Centrifugal pumps* used by many wineries do tremendous damage to grapes by excessive force resulting from the high rpm needed to achieve adequate pressure. High rpm centrifugal pumps also shear the juice. Vogelsang rotary lobe pumps do not need to revolve as fast to achieve the appropriate pressure required to move grapes into your holding tank resulting in better grape and juice quality with minimal shear.

*Progressing cavity pumps* tend to smash grapes and seeds releasing oil into the juice which will affect the taste of your wine. They are also known to severely damage grape skins. Progressing cavity pumps require higher horsepower motors and are very sensitive to foreign objects and debris such as staples that commonly get into the must. Our smaller rotary lobe pumps require less power for the same capacity as a progressing cavity pump and are able to pass solid objects up to 2½" (61mm).

*Other lobe pumps* use straight, not convoluted, two or three tipped lobes made from stainless steel that don't feature the large internal cavity that our HiFlo lobes have. This style of lobe crushes grapes, seeds, stems and skins. Because their steel will not give like our elastomeric will, these pumps will frequently lock up from staples and other debris. The straight three lobe design made from any material has the highest pulsation rate of all lobe designs. By contrast, HiFlo lobes are pulsation-free which greatly extends the life and integrity of all internal parts.



### Pump Over

Vogelang pumps are great for pump over applications. As with the must pump applications, centrifugal pumps shear the liquid each time the juice is cycled through the pump. The longer you pump over the juice the more aerated it gets. With a Vogelsang pump you get minimal liquid shear so you can pump over the juice longer which enables you to extract more of the flavor from the must. For smaller wineries that choose a smaller portable rotary lobe pump for must applications, a separate set of hoses can be configured so you can use the same unit for your pump over application.

### Leas

Vogelsang pumps are also ideal for pumping leas into your next holding tank. In this application centrifugal pumps can airlock when the leas becomes thicker as the tank is emptied often requiring manually pushing thicker leas into the pump intake opening. This is also an opportunity for your leas to become sheared. Our pump design will not airlock as it is designed to pump highly viscous liquid containing solids and needs no manual assistance. This is another application where smaller volume wineries can use their portably configured must pump.

### Pumace

Pumping the thick and heavy pumace remaining after the leas tank has been emptied is another application that can be easily accomplished by either a stationary or portably configured pump.



### Performance Specifications:

| Series & Model | Capacity   |                   | Displacement |          | Max Solids |     | Flange Size |     | Max Pressure |     |         |     | Speed rpm 1/min. |         |     |
|----------------|------------|-------------------|--------------|----------|------------|-----|-------------|-----|--------------|-----|---------|-----|------------------|---------|-----|
|                | gpm        | m <sup>3</sup> /h | gal/100rev   | l/100rev | in         | mm  | in          | mm  | Q: psi       | bar | QD: psi | bar | nom.             | max.    |     |
| <b>100</b>     | <b>45</b>  | 13-60             | 3-13         | 7.7      | 29         | .75 | 20          | 2.5 | 65           | 145 | 10      |     | 200-800          | 1000    |     |
|                | <b>64</b>  | 22-85             | 5-19         | 11.1     | 42         | .75 | 20          | 3   | 80           | 131 | 9       |     | 200-800          | 1000    |     |
|                | <b>90</b>  | 26-120            | 6-26         | 15.6     | 59         | .75 | 20          | 4   | 100          | 102 | 7       |     | 200-800          | 1000    |     |
|                | <b>128</b> | 40-170            | 9-38         | 22.2     | 84         | .75 | 20          | 4   | 100          | 58  | 4       |     | 200-800          | 1000    |     |
| <b>136</b>     | <b>70</b>  | 45-200            | 10-45        | 33.5     | 127        | 1.5 | 40          | 4   | 100          | 145 | 10      | 174 | 12               | 150-650 | 800 |
|                | <b>105</b> | 65-310            | 15-70        | 50       | 190        | 1.5 | 40          | 4   | 125          | 145 | 10      | 174 | 12               | 150-650 | 800 |
|                | <b>140</b> | 90-400            | 20-90        | 67       | 253        | 1.5 | 40          | 6   | 125          | 116 | 8       | 174 | 12               | 150-650 | 800 |
|                | <b>210</b> | 130-610           | 30-140       | 100      | 380        | 1.5 | 40          | 6   | 150          | 73  | 5       | 145 | 10               | 150-650 | 800 |
|                | <b>280</b> | 180-800           | 40-180       | 134      | 506        | 1.5 | 40          | 6   | 150          |     |         | 116 | 8                | 150-650 | 650 |
|                | <b>420</b> | 260-1220          | 60-280       | 200      | 759        | 1.5 | 40          | 6   | 150          |     |         | 87  | 6                | 150-650 | 650 |
| <b>186</b>     | <b>92</b>  | 90-440            | 20-100       | 94       | 356        | 2.5 | 61          | 6   | 125          | 145 | 10      |     |                  | 100-500 | 600 |
|                | <b>130</b> | 130-640           | 30-145       | 133      | 503        | 2.5 | 61          | 6   | 150          | 145 | 10      | 174 | 12               | 100-500 | 600 |
|                | <b>184</b> | 180-880           | 40-200       | 188      | 712        | 2.5 | 61          | 6   | 150          | 116 | 8       | 174 | 12               | 100-500 | 600 |
|                | <b>260</b> | 260-1280          | 60-290       | 266      | 1006       | 2.5 | 61          | 8   | 200          | 73  | 5       | 145 | 10               | 100-500 | 600 |
|                | <b>368</b> | 360-1760          | 80-400       | 376      | 1424       | 2.5 | 61          | 10  | 250          | 29  | 2       | 116 | 8                | 100-500 | 600 |
|                | <b>390</b> | 390-1920          | 90-435       | 399      | 1509       | 2.5 | 61          | 10  | 250          | 29  | 2       | 102 | 7                | 100-500 | 600 |
|                | <b>520</b> | 520-2560          | 120-580      | 532      | 2012       | 2.5 | 61          | 10  | 250          |     |         | 87  | 6                | 100-500 | 600 |
|                | <b>736</b> | 720-3520          | 160-800      | 752      | 2848       | 2.5 | 61          | 14  | 350          |     |         | 44  | 3                | 100-500 | 600 |

### Worldwide Factory & Sales Office Locations:

#### The Americas:

Factory:

Vogelsang USA  
7966 State Route 44  
PO Box 751  
Ravenna, Ohio 44266

Toll-Free: 800.984.9400  
Tel: 330.296.3820  
Fax: 330.296.4113

sales@vogelsangusa.com  
www.vogelsangusa.com

#### Germany:

Factory:

Vogelsang Deutschland West  
D-49632 Essen (Oldb.)

Tel: +49.5434.830  
Fax: +49.5434.8310

Vogelsang Deutschland Ost  
D-06295 Rothenschirmbach

Tel: +49.34776.20581  
Fax: +49.34776.20582

#### Hungary:

Vogelsang  
10 Raho Street  
Budapest H-1118

Tel: +36.1.319.2551  
Fax: +36.1.319.2553

#### Denmark:

Vogelsang Dänemark  
DK-6880 Tarm

Tel: +45 9737.2777  
Fax: +45 9737.3077

#### Asia:

Vogelsang Malaysia  
24 Jalan Ara SD7/3D  
Bandar Sri Damansara  
52200 Kuala Lumpur

Tel. & Fax: +603 62729187

#### France:

Vogelsang S.a.r.l.  
Zone Artisanale de Fontgrave  
in 26740 Montboucher Sur  
Jabron

Tel: 00.33.6.73.61.58.64

#### United Kingdom & Eire:

Vogelsang UK  
Unit 13 Cobden Ind. Est.  
Quakers Coppice  
Crewe Gates  
Crewe, Cheshire, CW1 6EW

Tel: 01270.216600  
Fax: 01270.216699

vogelsangusa.com

