



Fruit processing machinery

Pome fruit processing

BELT PRESS TP50



POME FRUIT
PRESSING



BELT PRESS

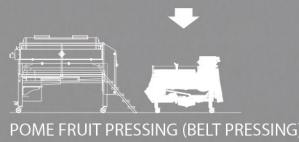
TP50



POME FRUIT
PRESSING



Belt
pressing

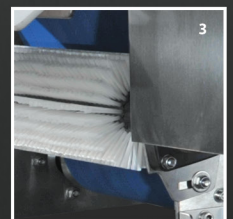
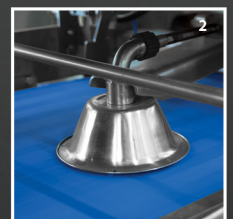
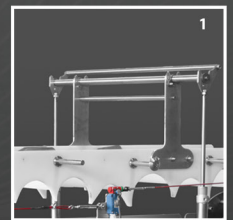


🇬🇧 Description

The belt press is designed for pressing fruit mass. Fruit mass is placed on the tape which presses it against cylinders. The obtained juice flows in the collection trays under the press. The pressing is continuous.

Main features:

- Entirely made of stainless steel.
- Mounted on pivoting wheels or adjustable feet.
- Automatic functioning of press.
- Level switch in the dumping hopper.
- Equipped with a compressor.
- Easy to clean with no closed or inaccessible spaces.
- Cleaning of belt with high pressure cleaner, scraper and brush.
- Pneumatic lifting of the scrapers unit for easier access when cleaning.
- Level switch in the collection tray.



PNEUMATIC
LIFTING



FOOD CONTACT
MATERIALS

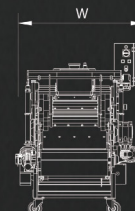
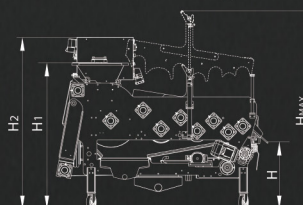
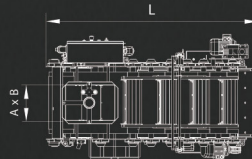


RESISTANT
MATERIALS



EASY CLEANING

TP50		
Capacity	kg/h	700
Dry weight	kg	650
L	mm	2100
W	mm	1235
H	mm	610
H1	mm	1376
H2	mm	1618
HMAX	mm	1750
A x B	mm	330 x 450
Power source	kW	1,5



Technical data is informative. We reserve the right to make changes.